



## 1. Introduction

This application note provides guidelines for board mounting of surface mount semiconductor packages. Nowadays, reflow soldering is a widely spread technology for soldering of surface mount semiconductor packages. For some of the newer semiconductor packages, such as a Ball Grid Array (BGA), reflow soldering is the only suitable method.

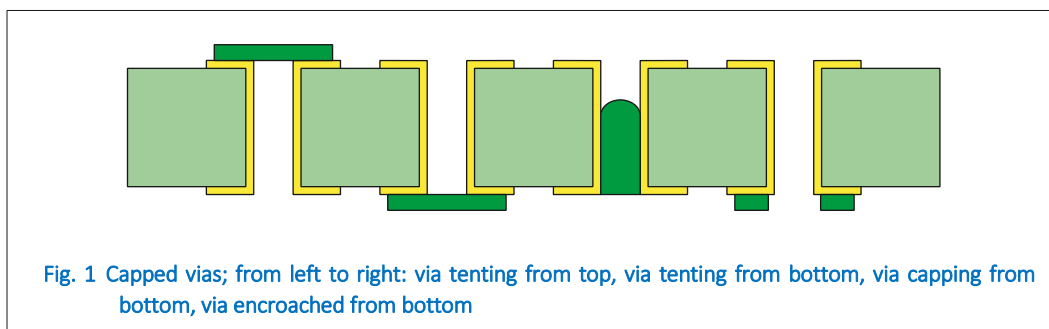
This application note describes the materials for reflow soldering: the Printed-Circuit Board (PCB), semiconductor packages and solder paste. One of the key features of the PCB is the footprint design. The footprint design describes the recommended solder land on the PCB to make a reliable solder joint between the semiconductor package and the PCB. A proven solder material is SnPb, but due to legislation, the industry has changed, to a large extent, to Pb-free solutions such as Sn/Ag/Cu (SAC). Process requirements for solder paste printing and reflow soldering, for SnPb and Pb-free, are also discussed in this application note. This document concludes with sections on inspection and repair and component handling.

## 2. Materials

### 2.1 Printed-circuit boards and footprints

Printed-Circuit Boards (PCBs) are not only used as mechanical carriers for electronic components; they also provide the electronic interconnection between these components and between these components and the outside world. These electronic components may be semiconductors, or other types such as capacitors and resistors. Through component selection and the use of Cu interconnections between the components, an electronic system, such as a mobile phone, can be assembled on a PCB. The substrates used for mounting the packages can be made of a variety of materials with different properties such as FR4, FR5, BT, flexible polymers (polyimides or poly-amid) etc.

Due to the increased transistor density in the latest semiconductor technologies, and higher current (power) handling requirements, generation of heat has become a major limitation of semiconductor performance. By applying an exposed pad or heat sink in the semiconductor package, in combination with thermal vias in the PCB, the heat can be transferred from the active die to the outside world. Four examples of vias capped in different ways, are shown in Figure 1. Note that the only difference lies in the solder resist pattern.



Common board finishes include NiAu, Organic Solderability Preservative (OSP), and immersion Sn. Although finishes may look different after re-flow, and some appear to have better wetting characteristics than others, all common finishes can be used, if they are in accordance with the specifications.

Examples of other issues in board quality are tolerances on the pad and solder resist dimensions and component placement, maximum board dimensions, and flatness.

The application board is usually a mix of large and small components together with thermal design features. In board designs where large components or thermal design features are in close proximity to small components, solderability issues may arise.

A footprint design describes the recommended dimensions of the solder lands on the PCB, to make reliable solder joints between the semiconductor package and the PCB. The package outline and PCB footprints of WeEn semiconductor packages can be found by clicking “Packages” in the “Looking for products” panel on the product information page of the WeEn Semiconductors web site at the URL given in “Contact information” at the bottom of page 2. The unique identifier for the PCB footprint is the WeEn package outline code (the package SOT or SOD number).

For general guidelines on board design, see IPC-7351: Generic requirements for surface mount devices and land pattern standard.

The next paragraph explains how to read the PCB footprint. Figure 2 shows an example of a PCB footprint, as found on the WeEn Semiconductors web site.

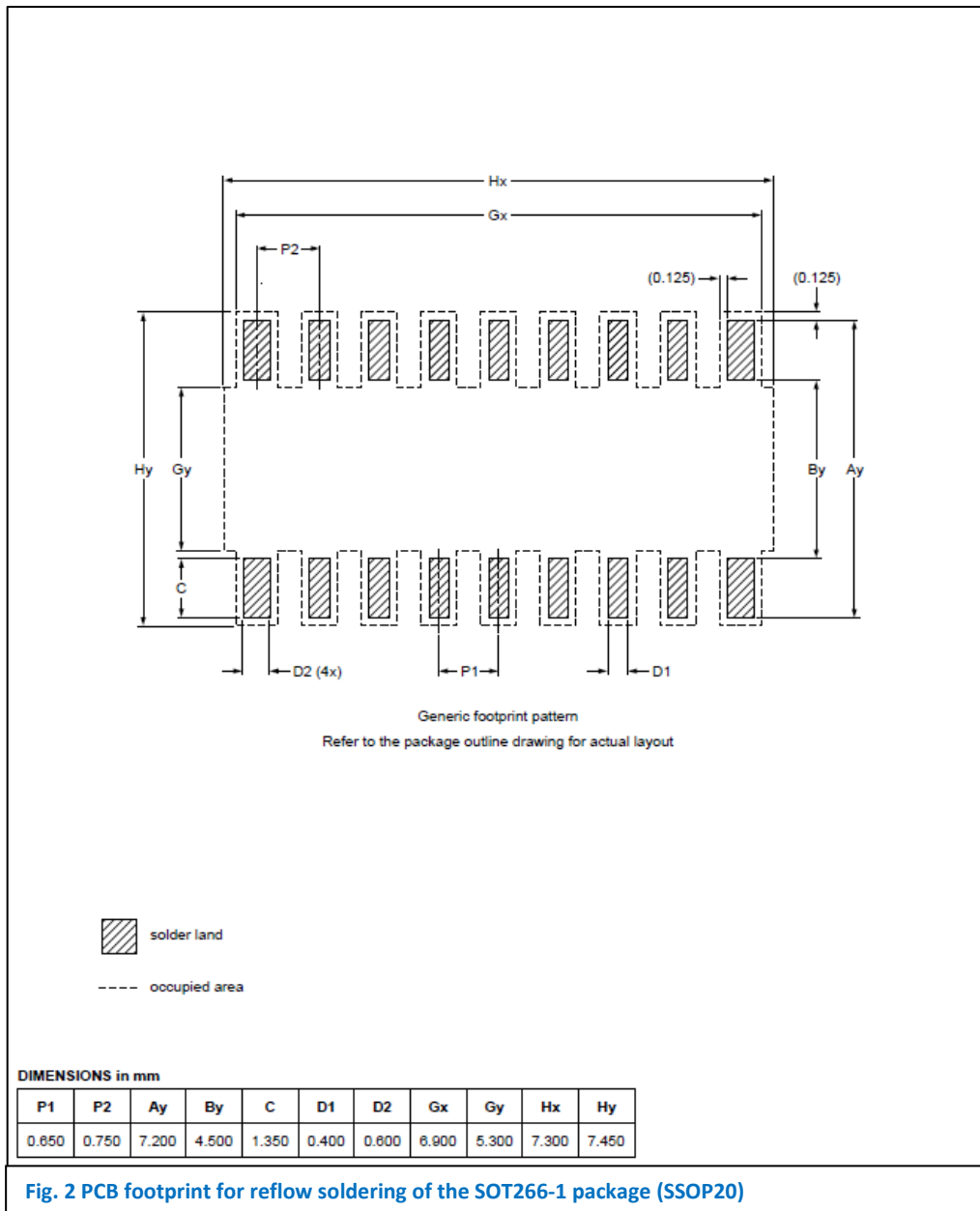
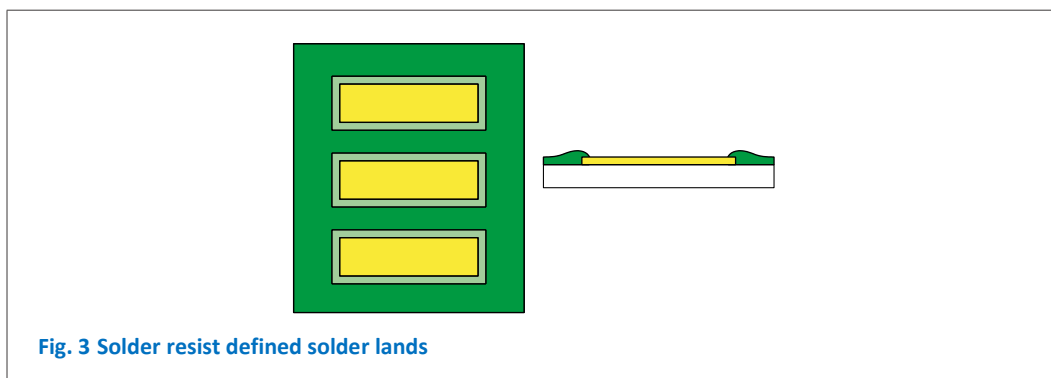


Fig. 2 PCB footprint for reflow soldering of the SOT266-1 package (SSOP20)

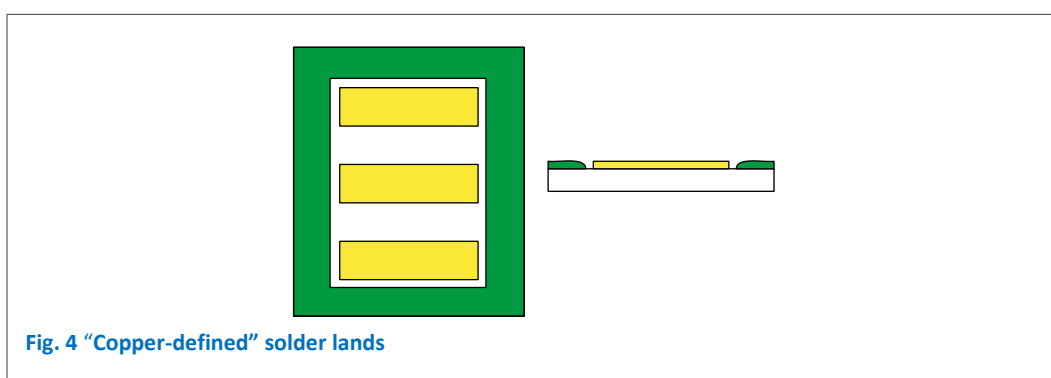
All footprints within a package family (in this example all SSOP packages) use the same generic footprint drawing, regardless of the actual number of package terminals. In this example, it is not accidental that the generic footprint drawing shows 18 terminals, whereas the SSOP20 package has 20 terminals. The table on the PCB footprint, below the drawing, shows the actual dimensions for the specific package outline (with 20 terminals), while the generic drawing is used to illustrate the dimensions. The real package outline (with the correct number of terminals) can be found by clicking “Packages” in the “Looking for products” panel on the product information page of the WeEn web site at the URL given in “Contact information” at the bottom of page 2.

The soldering process is carried out under a set of process parameters that includes accuracies in the process, and semiconductor package, board, and stencil tolerances. The footprint design is directly related to these aspects of the soldering process; the calculation of these dimensions is based on process parameters that are compliant with modern machines and a state-of-the-art process.

A solder resist layer (also known as a solder mask layer) is usually applied to the board, to isolate the solder lands and tracks. If this solder resist extends onto the Cu, the remaining area to be soldered is solder resist defined. This is sometimes referred to as Solder Mask Defined (SMD). Figure 3 shows solder resist defined pads; yellow is Cu and dark green is solder resist. The Cu underneath the solder resist is shown in a lighter shade of green.



The alternative situation is that the solder resist layer starts outside of the Cu. In that case, the solder lands are “Copper-defined”. This is sometimes referred to as Non-Solder Mask Defined (NSMD). A Copper-defined layout is shown in Figure 4 (white is the bare board).



A layout can also be partially solder resist defined and partially Copper-defined.

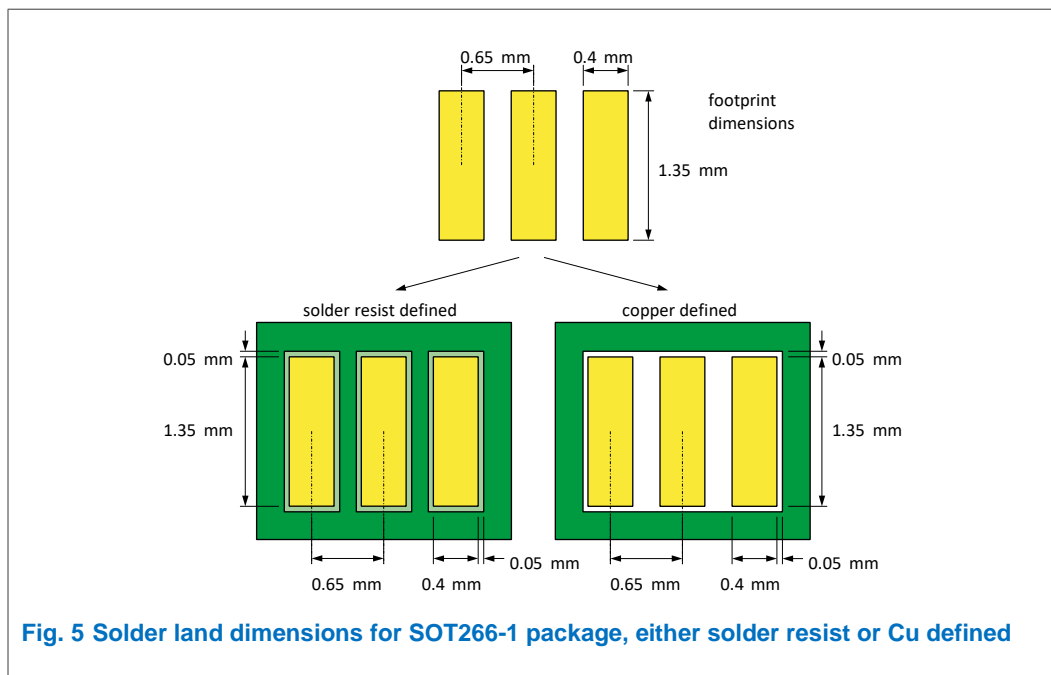
Note that a solder resist defined layout requires the application of a solder resist bridge between two terminals. There is a minimum width of solder resist that can be applied by board suppliers. This fact, in

combination with a maximum solder resist placement accuracy, implies that solder resist defined layouts are not always possible. For semiconductor packages with a small pitch it is not possible to apply a solder resist bridge between two terminals, and a “Copper-defined” or combination layout must be used.

If a solder land is solder resist defined, the Copper must extend far enough underneath the solder resist to allow for tolerances in Copper etching and solder resist placement during board production. Similarly, if a solder land is Copper-defined, the solder resist must lie sufficiently far away from the solder land to prevent bleeding of the solder resist onto the Copper pad. Typical values for these distances are 50  $\mu\text{m}$  to 75  $\mu\text{m}$ .

The footprints referred to in this document indicate the areas that can be soldered.

The footprint shown in Figure 2 is redefined for both a solder resist and a Copper layout in Figure 5. Note that the overlap/gap between the solder resist and the Copper is 0.05 mm in this particular example.



**Fig. 5 Solder land dimensions for SOT266-1 package, either solder resist or Cu defined**

## 2.2 Semiconductor packages

Semiconductor packages can be divided into groups. In this document, they are categorized according to the shape of the terminals, as this has the largest influence on board assembly. Accordingly, the three main semiconductor family types are:

- leaded packages
- leadless packages with solder balls
- leadless packages with solder lands

Apart from the terminals, packages can have heat sinks and/or ground connections.

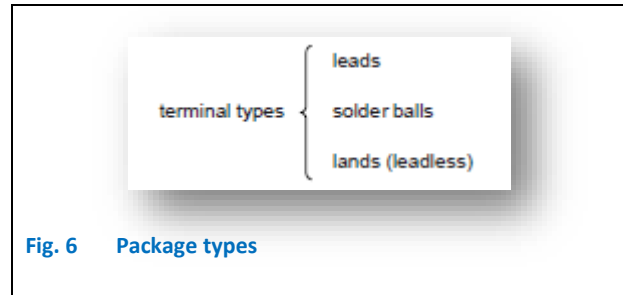


Fig. 6 Package types

### Leaded packages

- Coplanarity is an important issue: coplanarity must be within the specifications (refer to the package outline drawing) in order to prevent the occurrence of open circuits or bad joints; poor coplanarity may also increase problems caused by board warpage.
- The tips of leads, where they are cut out of the lead frame, do not have to be wetted after reflowing.
- Within WeEn Semiconductors, two possible lead finishes are applied: pure Sn, and NiPdAu. The finish used depends on the package family. SnPb finish is still used, but only for selected applications.
- Leaded packages can be reflow-soldered: standard gullwing packages can be wave soldered only if the lead pitch is equal to, or larger than, 0.65 mm and if no exposed heatsink is present. Wave soldering smaller pitches will lead to a higher defect level.

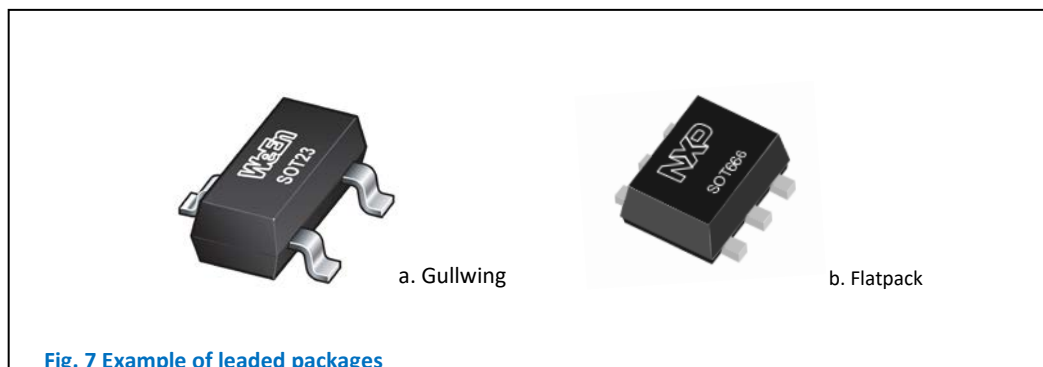


Fig. 7 Example of leaded packages



#### Leadless packages with solder balls

- These semiconductor packages are particularly good at self-alignment, as the package body is essentially suspended over molten solder during reflow; therefore, this package type results in a robust reflow soldering process
- The balls are made of SnPb, or SAC for Pb-free applications
- Packages with solder balls can only be reflow soldered, they cannot be wave soldered



#### Leadless packages with solder lands

- The exposed lead frame edges at the sides of the semiconductor packages are often not finished - these do not have to be wetted for a proper joint
- Possible solder land finishes are pure Sn or NiPdAu for Pb-free applications and in exceptions SnPb

- Leadless packages with solder lands can only be reflow soldered, they cannot be wave soldered

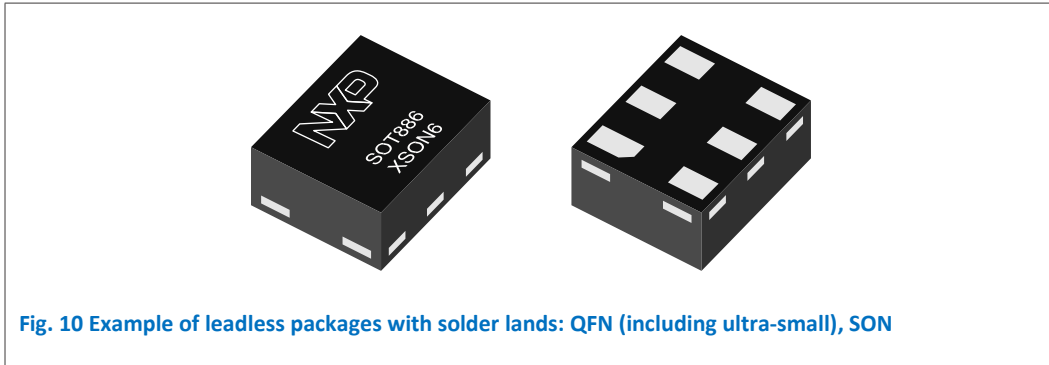


Fig. 10 Example of leadless packages with solder lands: QFN (including ultra-small), SON



Fig 11. Example of leadless packages with solder lands: HVQFN

Semiconductor packages can have heat sinks at the top or the bottom of the package. The following remarks apply to those with heat sinks at the bottom, such as HVQFNs:

- Even if the exposed pad does not have to be soldered to the board for electrical or thermal purposes, the package reliability may improve if it is soldered to the board
- Voids in the solder joint connecting the heat sink pad to the board are allowed, if this does not conflict with demands made by the application



## 2.3 Solder paste

In line with European legislation, it is recommended to use Pb-free solder paste, although exemptions are granted for selected applications, such as automotive.

A wide variety of Pb-free solder pastes are available, containing combinations of tin, copper, antimony, silver, bismuth, indium, and other elements. The different types of Pb-free solder pastes have a wide range of melting temperatures. Solders with a high melting point may be more suitable for the automotive industry, whereas solders with a low melting point can be used for soldering consumer semiconductor packages.

As a substitute for SnPb solder, the most common Pb-free paste is SAC, which is a combination of tin (Sn), silver (Ag), and copper (Cu). These three elements are usually in the range of 3% to 4% of Ag and 0% to 1% of Cu, which is near eutectic. SAC typically has a melting temperature of around 217 °C, and it requires a reflow temperature of more than 235 °C.

**Table 1. Typical solder-paste characteristics**

Solder	Melting temperature	Minimum peak reflow temperature <sup>[1]</sup>
SAC	217 °C	235 °C
SnPb	183 °C	215 °C

[1] Temperature is measured at solder joint.

Care should be taken when selecting a solder and note that solder types are categorized by solder sphere size. For small packages or fine pitch applications solder paste type 3 or better is recommended.

A no-clean solder paste does not require cleaning after reflow soldering and is therefore preferred, provided that this is possible within the process window. If a no-clean paste is used, flux residues may be visible on the board after reflowing.

For more information on the solder paste, please contact your solder paste supplier.

## 3. Moisture sensitivity level and storage

If there is moisture trapped inside a package, and the package is exposed to a reflow temperature profile, the moisture may turn into steam, which expands rapidly. This may cause damage to the inside of the package (delamination), and it may result in a cracked semiconductor package body (the popcorn effect). A package's sensitivity to moisture, or Moisture Sensitivity Level (MSL), depends on the package characteristics and on the temperature, it is exposed to during reflow soldering.

The MSL of semiconductor packages can be determined through standardized tests in which the packages are moisturized to a predetermined level and then exposed to a temperature profile. Studies have shown that small and thin packages reach higher temperatures during reflow than larger packages. Therefore, small and thin packages must be classified at higher reflow temperatures.

The temperatures that packages are exposed to are always measured at the top of the package body.

Depending on the damage after this test, an MSL of 1 (not sensitive to moisture) to 6 (very sensitive to moisture) is attached to the semiconductor package. For every product, this MSL is given on a packing label on the shipping box. Each package is rated at two temperatures, for SnPb and Pb-free soldering conditions.

An example of a packing label is given in Figure 12.



An MSL corresponds to a certain out-of-bag time (or floor life). If semiconductor packages are removed from their sealed dry-bags and not soldered within their out-of-bag time, they must be baked prior to reflow, in order to remove any moisture that might have soaked into the package. MSLs and temperatures on the packing labels are to be respected at all times. Naturally, this also means that semiconductor packages with a critical MSL may not remain on the placement machine between assembly runs. Nor should partly-assembled boards, between two reflow steps, be stored longer than indicated by the MSL level.

The semiconductor package floor life, as a function of the MSL, can be found in Table 2.

**Table 2. Floor life as a function of MSL** <sup>[1]</sup>

MSL	Floor life	
	Time	Conditions
1	unlimited	≤ 30 °C/85 % RH
2	1 year	≤ 30 °C/60 % RH
2a	4 weeks	≤ 30 °C/60 % RH
3	168 hours	≤ 30 °C/60 % RH
4	72 hours	≤ 30 °C/60 % RH
5	48 hours	≤ 30 °C/60 % RH
5a	24 hours	≤ 30 °C/60 % RH
6	6 hours	≤ 30 °C/60 % RH

[1] Refer to IEC61760-2 Transportation and storage conditions of surface mounting devices and/or IPC/JEDECJ-STD-033B.1 Handling, packing, shipping and use of moisture/reflow sensitive surface-mount devices.

## 4. Surface mounting process

### 4.1 Solder paste printing

Solder paste printing requires a stencil aperture to be completely filled with paste. When the board is released from the stencil, the solder paste is supposed to adhere to the board so that all of the paste is released from the stencil aperture and a good solder paste deposit remains on the board. Ideally, the volume of solder paste on the board should equal the 'volume' of the stencil aperture.

In practice, however, not all of the solder paste is released from the stencil aperture. The percentage of paste released depends largely on the aperture dimensions, that is, the length and width and the depth (the stencil thickness). If a stencil aperture becomes very small, the paste will no longer release completely. Furthermore, stencil apertures must be larger if a thicker stencil is used.

Another important factor is the aperture shape, that is, whether the aperture is rectangular, trapezoidal, or otherwise. Paste release also depends - amongst others - on the loading and speed of the squeegee, the board separation speed, the printing direction, and the aperture orientation. All these parameters must be adjusted so that all solder paste deposits on one board, from the smallest to the largest, are printed properly.

Consequences of insufficient solder paste printing are usually open contacts or bad joints. These may arise because:

- The solder paste deposit is not sufficiently high: components or their leads may not make proper contact with the paste, resulting in open circuits or bad joints,

or

- There is insufficient solder volume for a proper solder joint, also resulting in open circuits,

or

- The activator is used up rapidly in a small solder paste deposit, so that the paste no longer properly wets the component metallization, also resulting in open circuits

A second important aspect in solder paste printing is smearing. If some solder paste bleeds between the stencil and the board during one printing stroke, then the next board may not fit tightly to the stencil, allowing more paste to bleed onto the bottom of the stencil. Once this effect starts, it strengthens itself. As a result, the solder paste may eventually form bridges that stretch from one paste deposit to the next. If a bridge is narrow enough, it will snap open during reflow, as the volume of molten solder seeks to attain minimum surface area. A wider bridge, however, may remain stable, resulting in a short-circuit.

To achieve a difference in solder-paste volumes on one board, it is possible to use a stencil that has a different thickness at different locations. An example of this is the step-stencil. This, however, is only recommended if there is no other solution.

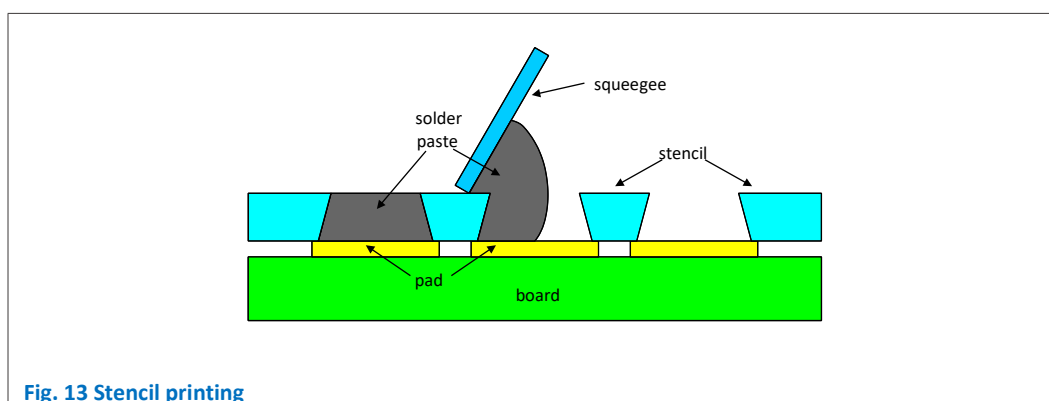
Stencils are commonly made from Nickel; they may be either electro-formed or laser-cut (preferred). Typical stencil thicknesses are given in Table 3.

**Table 3. Typical stencil thickness**

Semiconductor package pitch	Stencil thickness
$\geq 0.5$ mm	150 $\mu\text{m}$
0.4 mm to 0.5 mm	100 $\mu\text{m}$ to 125 $\mu\text{m}$

A general rule is that the stencil apertures must be 25  $\mu\text{m}$  smaller than the solder lands, on all sides. In other words, the solder paste lies 25  $\mu\text{m}$  inward from the solder land edge.

This usually results in stencil aperture dimensions that are 50  $\mu\text{m}$  smaller than the corresponding solder land dimensions; see Figure 14.



**Fig. 13 Stencil printing**

This rule does not apply for a BGA; for a BGA the solder paste deposit is shown explicitly in the PCB footprint specification. Although BGA balls and their solder pads are circular, square stencil apertures are sometimes preferred for a BGA.

Another exception lies with the very large solder lands, such as when printing solder paste on a heat sink land. In that case, it is advised to print an array of smaller solder paste deposits. The solder paste should cover approximately 20 % of the total land area. It is also advised to keep the solder paste away from the edges of this land: the solder paste pattern, including the spacing between the deposits, should have a coverage of 35

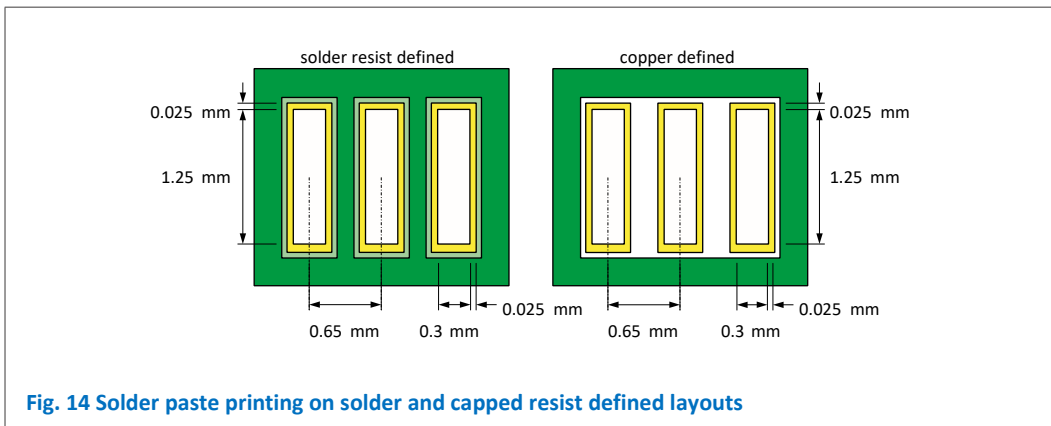


Fig. 14 Solder paste printing on solder and capped resist defined layouts

% of the land area; see Figure 15 and Figure 16.

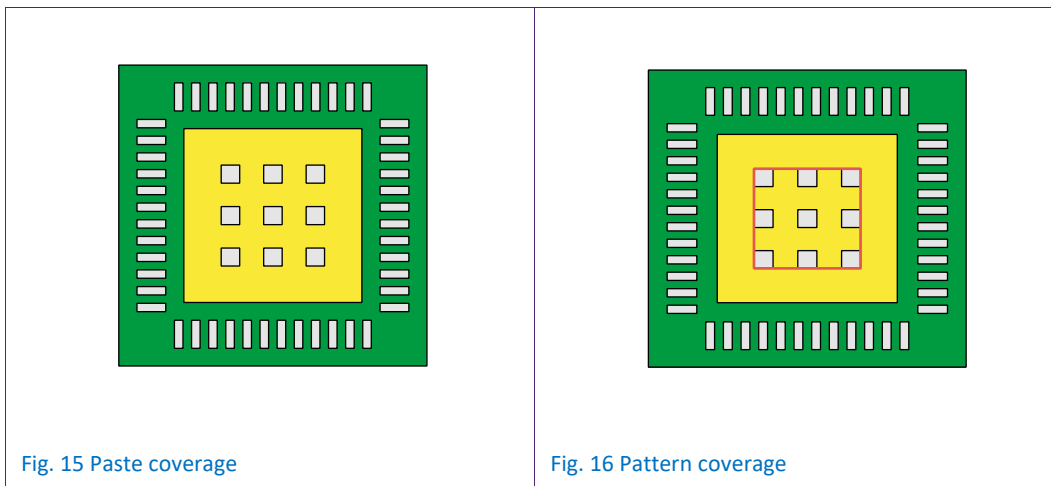


Fig. 15 Paste coverage

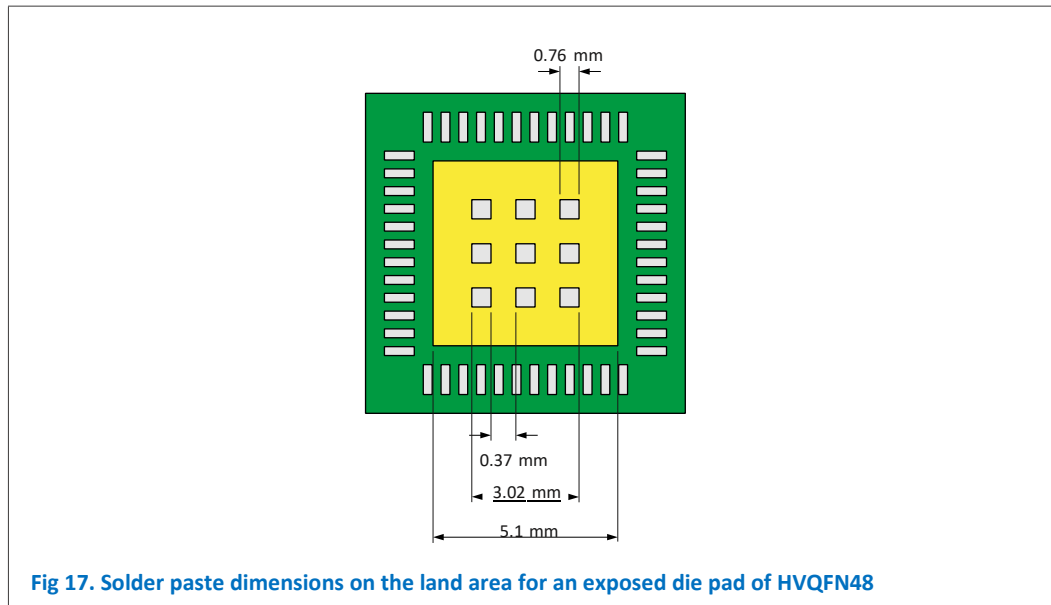
Fig. 16 Pattern coverage

A paste printing pattern for exposed die pads is illustrated by the example shown in Figure 17. A HVQFN48 with an exposed pad of 5.1 mm × 5.1 mm, for example, should have nine solder paste deposits that are arranged in a three-by-three array. The solder paste deposits are 0.76 mm × 0.76 mm, and the distance between them is 0.37 mm.

This way, the solder paste area is  $9 \times (0.76 \text{ mm} \times 0.76 \text{ mm})$  and dividing this by the land area  $5.1 \text{ mm} \times 5.1 \text{ mm}$  yields a solder paste coverage of approximately 20 %.

Similarly, the solder paste pattern (the paste, plus the area between the deposits) has a length of 3.02 mm. The pattern area, 3.02 mm × 3.02 mm, divided by the land area, yields a paste pattern coverage of approximately 35 %.

Depending on the solder paste used, the solder paste deposits printed on a large land may not always coalesce completely. In some cases, individual solder joints can still be recognized between the exposed die pad and



solder land on the board. It is possible that voids remain in the solder joints. Whether or not voids or incomplete coalescing of the solder are a problem, depends on the application. For low-power devices in which little heat is generated, up to 80 % of voids may still be acceptable.

Keep in mind that printing a smaller volume of solder paste could have adverse effects on the solder joint reliability. Also, if there are vias in pads, solder paste deposits should be arranged so that paste is never printed directly over a via.

## 4.2 Semiconductor package placement

The required placement accuracy of a package depends on a variety of factors, such as package size and the terminal pitch, but also the package type itself. During reflow, when the solder is molten, a package that has not been placed perfectly may centre itself on the pads: this is referred to as self-alignment. Therefore, the required placement accuracy of a package may be less tight if this package is a trusted self-aligner. It is known, for example, that a BGA is good at self-alignment, as the package body essentially rests on a number of droplets of molten solder, resulting in minimal friction.

Remark: Self-alignment properties can be improved by performing the reflow process in a Nitrogen gas environment.

Typical placement tolerances for semiconductor package terminal pitch, are given in Table 4.

Table 4. Typical placement accuracy

Package terminal pitch	Placement tolerance ( $\pm 3$ sigma)
$\geq 0.65$ mm	100 $\mu$ m
$< 0.65$ mm $> 0.5$ mm	50 $\mu$ m
$< 0.5$ mm	30 $\mu$ m

Semiconductor packages are usually placed with two types of machines. If the highest placement accuracy is required, the slower but more accurate machines must be used. These machines are also often more flexible when it comes to unusual package shapes, that may require dedicated nozzles and non-standard trays. If the highest placement accuracy is not necessary, and there are no special requirements, fast component mounters or chip shooters, can be used. These machines can process up to 100,000 components per hour.

The placement force may also be an important parameter for some packages. In theory, a semiconductor package is always pressed down into the solder paste until it rests on a single layer of solder paste powder particles - the rest of the solder paste is pressed aside. A consequence that is immediately apparent, is that the solder paste that is pushed aside, or that bulges outside the package, may cause bridges with neighbouring solder paste deposits.

In extreme cases, solder paste may not only bulge outside the pads, but may be blasted further away from the pads, so that a small amount of solder paste is no longer connected to the paste deposit it originally came from. This must always be avoided as the splattered solder paste may cause a short circuit on the board, and the original solder paste deposit may then have insufficient solder. Incidentally, this effect is often caused in part by use of an improper nozzle shape, so that the paste is blown away by air from the nozzle.

If the placement force is too low, there is a chance that a semiconductor package terminal does not make enough contact with the solder paste. In that case, there is a risk that the solder paste tackiness will not be able to hold it in place up to the reflow zone in the oven, and the package may be displaced.

In addition, even if the semiconductor package remains in place, there may be bad contact between the package terminals and the solder paste resulting in open contacts or bad joints.

Therefore, the placement force must always be adjusted so that there is no excessive paste bulging or even splattering and there is a proper contact between the semiconductor package and the solder paste. The necessary placement force to achieve this will depend on a number of factors, including the package dimensions. Typical forces are 1.5 N to 4 N. Note however, that some of the more modern machines have a sensor that detects the package's proximity to the solder paste so that the placement speed is reduced as soon as the package comes near to, or touches, the solder paste. In this way, splattering can be minimized.

## 4.3 Reflow soldering

The most important step in reflow soldering is the reflow itself when the solder paste deposits melt and soldered joints are formed. This is achieved by passing the boards through an oven and exposing them to temperature that varies in time according to the “reflow temperature profile”.

A temperature profile essentially consists of three phases:

1. Preheat: the board is warmed up to a temperature that is lower than the melting point of the solder alloy
2. Reflow: the board is heated to a peak temperature that is well above the melting point of the solder but below the temperature at which the components and boards are damaged
3. Cooling down: the board is cooled down rapidly so that soldered joints freeze before the board exits the oven

The peak temperature during reflow has an upper and a lower limit:

- Lower limit of peak temperature (measured at the solder joint): the minimum peak temperature must be at least high enough for the solder to make reliable solder joints, determined by solder paste characteristics; contact your paste supplier for details
- Upper limit of peak temperature (measured at the top of the component body); the maximum peak temperature must be lower than:
  - a. The test temperature used for MSL assessment; see Section 3 “Moisture sensitivity level and storage”.
  - b. The temperature at which the boards are damaged, a board characteristic; contact your board supplier for details.

An indication of the recommended minimum peak temperatures for SnPb and SAC alloys is given in Table 5. However, these values should be verified with your solder paste supplier.

**Table 5. Typical solder paste characteristics**

Solder	Melting temperature	Minimum peak reflow temperature
SAC	217 °C	235 °C
SnPb	183 °C	215 °C

When a board is exposed to the profile temperature, certain areas on the board will become hotter than others: a board has hot spots (the hottest areas) and cold spots (the coolest areas). Cold spots are usually found in sections of the board that hold a high density of large components, as these soak up a lot of heat. Large areas of Cu in a board will also reduce the local temperature. Hot spots, on the other hand, are found



in areas with few components, or only the smallest components, and with little Cu. Finally, the board dimensions, and the board orientation in the oven, may also affect the location of hot and cold spots.

The temperature of the hot spot on a board must be lower than the upper limit of the peak temperature. Similarly, the temperature of the cold spot must be higher than the lower limit of the peak temperature.

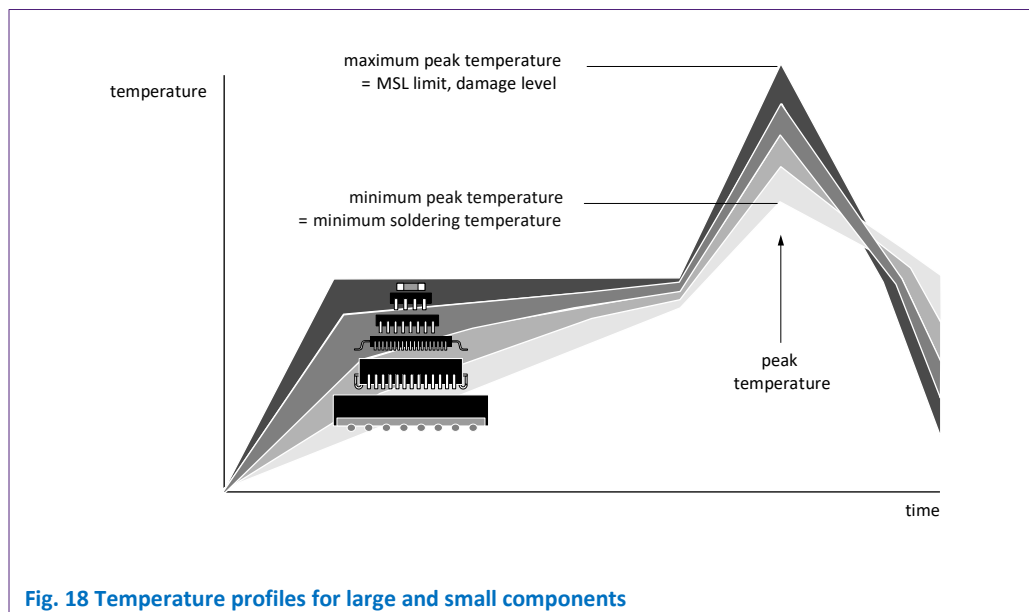


Fig. 18 Temperature profiles for large and small components

In Figure 18, the grey band with the large component represents cold spots, and the dark band, at the top, with the smallest component, represents hot spots. In both cases, the graph first represents a component body temperature, measured at the top of the body. In the preheat phase, the hot spots will heat up rapidly to a temperature lower than the melting point of the solder alloy. They may remain at this temperature for a while. Note however, that small solder paste deposits should not remain at an intermediate temperature for so long that their activator runs out: for small solder paste deposits, a fast temperature profile is preferred. The cold spots on the board will warm up far more slowly. The oven settings should be planned so that the cold as well as the hot spots will have reached roughly the same temperature by the end of the preheat phase.

The second phase in the reflow profile is the reflow zone, in which the solder melts and forms soldered joints. The minimum peak temperature, which all solder joints in the cold as well as the hot spots must reach, depends on the solder alloy. However, no region on the board may surpass a maximum peak temperature as this would result in component and/or board damage. See Section 3 “Moisture sensitivity level and storage” for more information. Even if the cold and hot spots at the start of the reflow phase have roughly the same temperature, the hot spots will reach a higher peak temperature than the cold spots.

Yet, both the hot spots and the cold spots must lie within the allowed peak temperature range. This may require some tweaking of the oven temperature settings and conveyor belt speeds. In some cases, the board layout may have to be optimized to limit the temperature difference between the cold and the hot spots.

When reflow soldering, the peak temperature should never exceed the temperature at which either the components or the board are damaged. The maximum peak temperature for components is partially determined by their moisture sensitivity. For reflow soldering with SnPb solder, the peak temperature should be higher than 215 °C; when soldering with SAC, the peak temperature should be higher than 235 °C but should not exceed a temperature of 260 °C. Note that this usually implies a smaller process window for Pb-free soldering, thus requiring tighter process control.

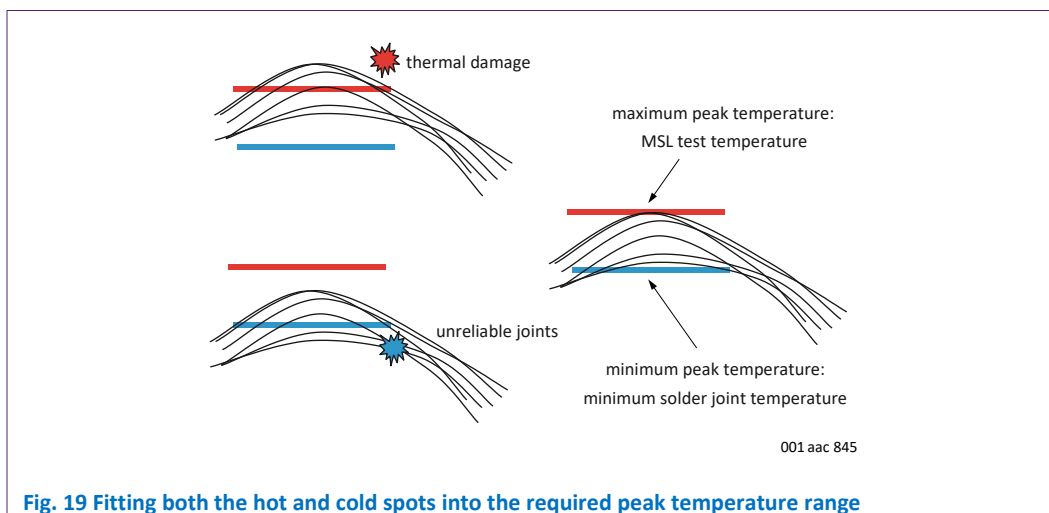


Fig. 19 Fitting both the hot and cold spots into the required peak temperature range

The black lines in Figure 19 represent the actual temperature profiles for several different temperature spots on a board. The bottom black line represents the coldest spot, and the top black line represents the hottest spot. The blue line represents the minimum peak temperature, and the red line is the maximum peak temperature. At the top left, some regions on the board are exposed to temperatures that are too high, exceeding MSL qualification conditions. At the bottom left, some regions on the board are exposed to temperatures that are too low, resulting in unreliable joints. At the right, all the regions on the board have peak temperatures that fall within the upper and lower limits.

Reflow may be done either in air or in nitrogen. In general, nitrogen should not be necessary; in that case, air is preferred because of the lower cost. Reflow may be done in convection reflow ovens, some of which have additional infrared heating. Furthermore, using vapor phase reflow soldering can reduce temperature differences on a board.

Application boards are usually populated with components on both sides of the board. This means that the board will need to undergo a soldering process twice. It is important, therefore, that the following details are taken into consideration prior to a double-sided reflow process to prevent damage to, or malfunction of the components.

- Components should be able to withstand multiple reflow cycles. As components are MSL classified, they are guaranteed to withstand three reflow cycles.

- If the time between first and second reflow exceeds the floor life of the corresponding MSL classification, the application board needs to be dried before the second reflow. Storage between reflow steps in a nitrogen cabinet or sealed MBB is also an option.
- Heavy components mounted during the first reflow may drop off during the second reflow, either due to their weight or because of vibration during transport through the reflow oven. Heavy components may be fixed in place with glue before reflow soldering.

## 4.4 Solder and terminal finish or solder ball compatibility

When selecting a solder paste, care must be taken that the solder is compatible with both the board and the semiconductor package finishes. When soldering leaded or leadless packages, all package finishes can be combined freely with all solders; see Table 6.

Table 6. Compatibility of ball and solder paste alloys, for leaded or leadless packages

Terminal finish	SnPb solder	Pb-free solder
SnPb	mature technology	ok
Pb-free	ok	ok

This however, is not the case for packages with solder balls. If these packages are soldered, the semiconductor package solder balls and the solder paste both melt to form a single joint. Therefore, it is essential that the reflow temperature profile reaches a temperature that is high enough for both the solder paste and the solder ball to melt and to form proper solder joints.

SnPb needs a temperature of at least 215 °C, but at least 235 °C is required for most Pb-free solders. There are four options:

- SnPb balls are combined with a SnPb paste: the balls and paste form good joints at a temperature of 215°C or more. This combination has been used for decades.
- SnPb balls are combined with a Pb-free paste: the paste requires a higher reflow temperature of at least 235°C; the solder balls only need 215°C so they will also melt properly: ok.
- Pb-free solder balls are combined with a SnPb paste: in this case only the Pb-free balls require a higher reflow temperature, whereas the rest of the process does not. Therefore, this combination is not advised.
- Pb-free solder balls are combined with a Pb-free paste: now the paste requires the same reflow temperature and so do the solder balls: ok.

The text above is summarized in Table 7.

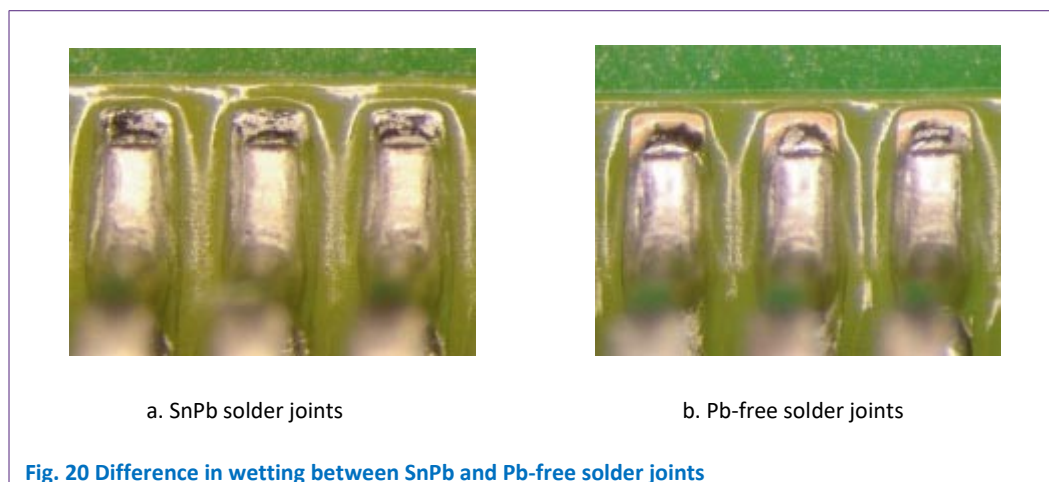
**Table 7. Compatibility of ball and solder paste alloys, for packages with solder balls**

Solder ball	SnPb solder	Pb-free solder
SnPb balls	mature technology	ok
Pb-free balls	not advised	ok

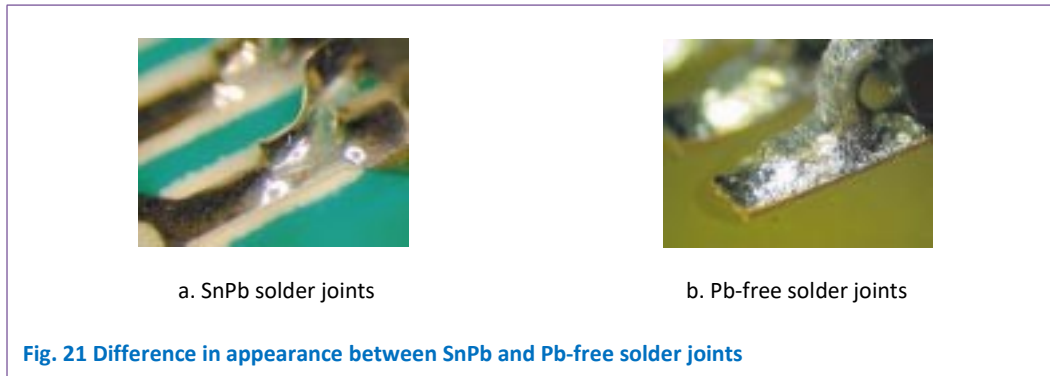
## 5. Inspection and repair

### 5.1 Inspection

In general, Pb-free solder is a little less successful at wetting than SnPb solders; SAC fillets will have a larger contact angle between the fillet and the wetted surface. When using Pb-free solder this contact angle may typically be 20° to 30°. Notice the difference between SnPb and Pb-free solder in Figure 20: the photograph on the left (SnPb) shows the solder lands have been wetted completely. The photograph on the right shows the solder has left part of the solder lands unwetted.



Another visual aspect in Pb-free soldering is that Pb-free solder joints tend to be less shiny than SnPb solder joints and they may have striation marks. This is due to the different microstructure that is formed during solidification. Although SnPb solder joints should be rejected if they look this way, this is normal for Pb-free and no reason to reject Pb-free solder joints.



Non-wetting of lead frame parts as a result of punching or sawing is not a reason for rejection.

Other inspection methods besides optical inspection, such as, for design and process development purposes are:

- Automatic optical inspection (AOI)
- Examination by roentgen ray (X-ray)
- Cross-sectional analysis
- Dye penetration test

## 5.2 Repair

Sometimes, a package lead that has not been soldered properly may be repaired simply by heating this single lead with the tip of a soldering iron. In this case, it is sufficient to heat the lead until the solder melts completely; a new device should not be necessary.

In other situations, however, there may be a need to replace a semiconductor package on the board. In that case, the rework process should comprise the following steps:

1. Device removal
2. Site preparation
3. Application of solder paste to the site
4. Device placement
5. Device attachment

It is advisable to dry bake the board for 4 hours at 125 °C prior to steps 1 to 5.

### 5.2.1 Device removal

In order to remove a semiconductor package from the board, it must be heated; if possible, this must be done as locally as possible to avoid heating the surrounding board and components. Packages with leads at a relatively large pitch may first be removed from the board by cutting the leads, after which only the leads must be de-soldered. This can be done with a soldering iron.

Semiconductor packages without leads must be heated entirely for removal. Heat can be supplied using a hot air gun, a soldering iron, or focused infrared energy, depending on the package type and availability. If necessary, the bottom of the board can also be heated. The temperature to which the package solder joints should be heated depends on the solder that was originally used, and it is best to keep the temperature as low as possible, just above the melting point of the solder alloy used.

As soon as the solder has melted, the semiconductor package is lifted from the board using a vacuum wand or tweezers; note that package removal should not be initiated until the solder has melted entirely.

Re-use of removed semiconductor packages is not recommended.

### 5.2.2 Site preparation

After the device has been removed, the board area must be prepared for the new device.

Prepare the site by removing any excess solder and/or flux remains from the board. Ideally this can be done on an appropriate de-soldering station, using solder wick or an alternative method.

After most of the solder has been removed from a solder land, a very thin layer of solder will be left on top of a few intermetallic layers. In the case of Cu boards for example, there will be layers of  $\text{Cu}_3\text{Sn}$ ,  $\text{Cu}_6\text{Sn}_5$  and finally solder, on top of the Cu. The top layer of solder is easily soldered.

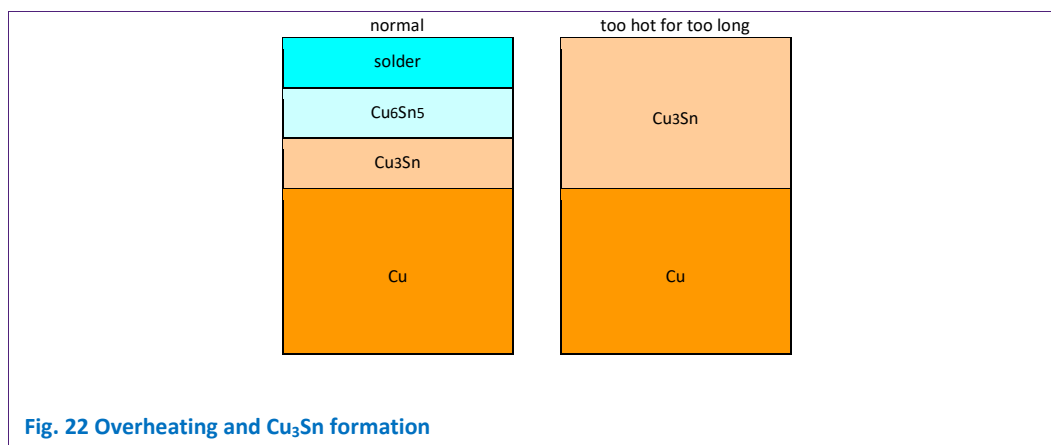


Fig. 22 Overheating and  $\text{Cu}_3\text{Sn}$  formation

If, however, the pad is heated too much during removal of the rejected semiconductor package and during site preparation, the top two layers will also be converted into  $\text{Cu}_3\text{Sn}$ . In this case there will only be the  $\text{Cu}_3\text{Sn}$  intermetallic layer on top of the Cu. Unfortunately,  $\text{Cu}_3\text{Sn}$  is hardly wettable, as a result, it will become very

difficult to solder the replacement package at this location. Therefore, care must be taken during reject package removal and site redress that the solder lands are heated not more than necessary.

### 5.2.3 Solder paste printing

After the site redress is completed solder paste should be applied to either the site or the device. This can be done by using a miniature stencil or other in-house techniques.

Preferably, the same type of solder paste should be used as was originally applied on the board.

If the new device that is to be soldered to the board has solder balls, solder paste printing is not necessary. In this case it suffices to apply a thin layer of tacky flux on the solder lands on the PCB.

### 5.2.4 Device placement

The last step of the repair process is to solder the new semiconductor package on the board. If necessary, the new package may be aligned under a microscope or split beam system, possibly in a special repair station. If this is not possible, try to align the device with board markers.

### 5.2.5 Soldering

To reflow the solder, apply a temperature profile that is as close as possible to the original reflow profile used for assembling the board. Take care that the board and/or semiconductor package are not moved or tilted until the solder has solidified completely. Note that if a board is exposed to reflow temperatures a second time, it may be necessary to dry bake the board for the sake of the components that have already been mounted.

## 6. Component handling

### 6.1 Electrostatic charges

Damage to semiconductors from Electrostatic Discharge (ESD) is a major cause of rejects and poses an increased risk to miniaturized packages. Electrostatic charge can be stored in many things, for example, man-made fibre clothing, moving machinery, objects with air blowing across them, plastic storage bins, sheets of paper stored in plastic envelopes, paper from electrostatic copying machines, and people. Electrostatic discharge is the transfer of an electrostatic charge between bodies at different potentials and occurs with direct contact or when induced by an electrostatic field. It is recommended that the following ESD precautions are complied with.

#### 6.1.1 Workstations for handling ESD sensitive components

Figure 23 shows a working area suitable for safely handling electrostatic-sensitive devices. The following precautions should be observed.

- Workbench and floor surface should be lined with anti-static material

- Persons at a workbench should be earthed via a wrist strap and a resistor
- All mains-powered equipment should be connected to the mains via an earth leakage switch
- Equipment cases should be grounded
- Relative humidity should be maintained between 40 % and 50 %
- An ionizer should be used to neutralize objects with immobile static charges in case other solutions fail
- Keep static materials, such as plastic envelopes and plastic trays away from the workbench. If there are any such static materials on the workbench remove them before handling the semiconductor devices.
- Refer to the current version of the handbook EN100015(CECC00015) “Protection of Electrostatic Sensitive Devices”, which explains in more detail how to arrange an ESD protective area for handling ESD sensitive devices

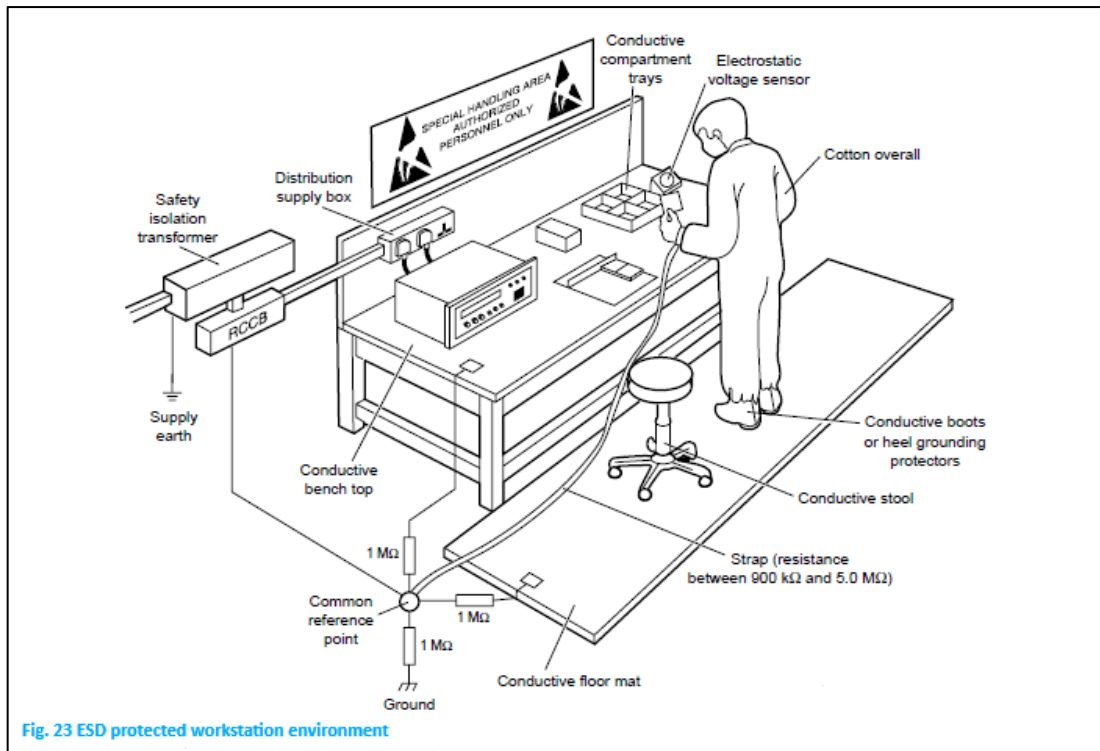
### 6.1.2 Receipt and storage of components

Packing for electrostatic devices should be made of anti-static/conductive materials. Warning labels on both primary and secondary packing show that the contents are sensitive to electrostatic discharge. The electronic components should be kept in their protective packing and unpacking should be done at a protected workstation. Any electronic components that are stored temporarily should be re-packed in conductive or anti-static packing or carriers.

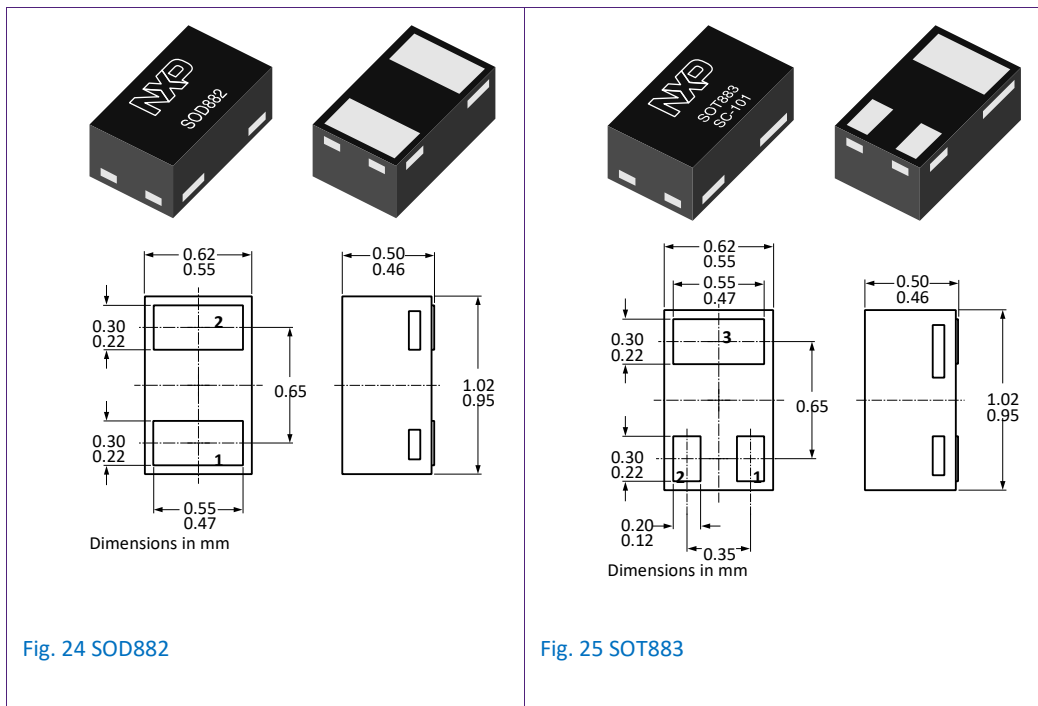
### 6.1.3 PCB assembly

All tools used during assembly, including soldering tools and solder baths, must be grounded. All hand tools should be of conductive or anti-static material and where possible should not be insulated. Standard precautions for manual handling of electrostatic-sensitive devices need to be considered.





6.1.4 Ultra small leadless packages (such as SOD882, SOT883)



The main advantage of ultra-small leadless packages is that they need less board space for a given function of a semiconductor device than packages with leads. These packages however, are more susceptible to mechanical damage due to their size and construction than standard gullwing packages or packages with relatively large soldering areas. Any sheer forces acting on the side of the body of the device or excessive bending of the board can easily cause the device to be damaged or dislodged. Compliance with international board mounting standard IPC-A-610 is recommended when working with boards.

During manual processes such as physical inspection, the moving of boards to other locations and/or other manual handling processes, there is risk of damage to ultra-small leadless packages.

Special care is needed if flexible substrates (e.g. thickness in the range 0.1 mm - 0.2 mm) are used. They are designed to be folded but excessive bending, at positions where semiconductor packages are placed, needs to be excluded. During transportation in production, supporting with carrier tools (frames) is highly recommended.

The risk of damage is greater if the devices are mounted near the edge of the board rather than towards the centre of the board where the small components can be surrounded by other components, thereby providing a form of protection.

Manual touching should be avoided. If manual handling is unavoidable, handle with care and avoid applying shear forces of more than 4 N to the sides of the devices. An assembled board should be held by the edges (see Figure 26) or handled while contained in a specially designed cassette or another dedicated carrier tool (frame).

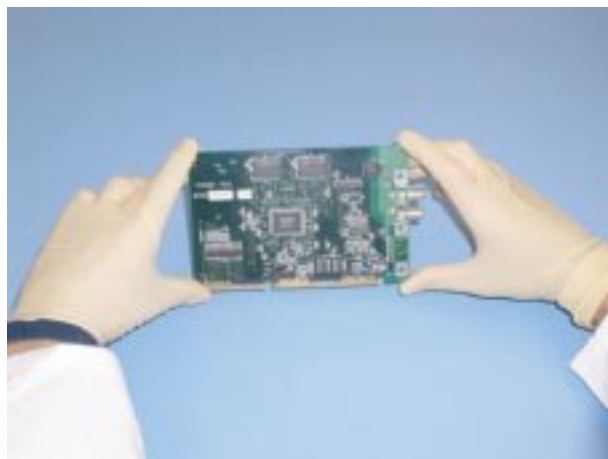


Fig. 26 Manual handling of an assembled board

## 7. Abbreviations

**Table 8. Abbreviations**

Acronym	Description
BT	Bismaleimide Triazine
FR	Flame Resistant
HVQFN	Heatsink Very thin Quad Flat-pack No leads
MBB	Moisture Barrier Bag
QFN	Quad Flat No leads
QFP	Quad Flat Package
RCCB	Residual Current Circuit Breaker
SON	Small Outline No Leads
SSOP	Shrink Small Outline Package
TFBGA	Thin and Fine-pitch Ball Grid Array
URL	Uniform Resource Locator

## 8. References

- [1] IPC/JEDEC J-STD-020D August 2007 — Joint Industry Standard Moisture/Reflow, Sensitivity Classification for Non-hermetic Solid-State Surface Mount Devices
- [2] IPC-7351 — Generic requirements for Surface Mount Design and Land Pattern Standard, IPC
- [3] EN 100015/CECC 00015 — Protection of Electrostatic Sensitive Devices, European Standard
- [4] 3997.750.04888 — Quality reference handbook, NXP
- [5] IPC-A-610D — Acceptability of Electronic Assemblies, IPC

## Revision history

Rev	Date	Description
v.1	20120529	initial version
v.2	20190502	new company update
v.3	20190805	new format

## Contact information

For more information and sales office addresses please visit: <http://www.ween-semi.com>

## Legal information

### Definitions

Draft — The document is a draft version only. The content is still under internal review and subject to formal approval, which may result in modifications or additions. WeEn Semiconductors does not give any representations or warranties as to the accuracy or completeness of information included herein and shall have no liability for the consequences of use of such information.

### Disclaimers

Limited warranty and liability — Information in this document is believed to be accurate and reliable. However, WeEn Semiconductors does not give any representations or warranties, expressed or implied, as to the accuracy or completeness of such information and shall have no liability for the consequences of use of such information. WeEn Semiconductors takes no responsibility for the content in this document if provided by an information source outside of WeEn Semiconductors.

In no event shall WeEn Semiconductors be liable for any indirect, incidental, punitive, special or consequential damages (including - without limitation - lost profits, lost savings, business interruption, costs related to the removal or replacement of any products or rework charges) whether or not such damages are based on tort (including negligence), warranty, breach of contract or any other legal theory.

Notwithstanding any damages that customer might incur for any reason whatsoever, WeEn Semiconductors' aggregate and cumulative liability towards customer for the products described herein shall be limited in accordance with the *Terms and conditions of commercial sale* of WeEn Semiconductors.

Right to make changes — WeEn Semiconductors reserves the right to make changes to information published in this document, including without limitation specifications and product descriptions, at any time and without notice. This document supersedes and replaces all information supplied prior to the publication hereof.

Suitability for use — WeEn Semiconductors products are not designed, authorized or warranted to be suitable for use in life support, life-critical or safety-critical systems or equipment, nor in applications where failure or malfunction of an WeEn Semiconductors product can reasonably be expected to result in personal injury, death or severe property or environmental damage. WeEn Semiconductors and its suppliers accept no liability for inclusion and/or use of WeEn Semiconductors products in such equipment or applications and therefore such inclusion and/or use is at the customer's own risk.

Applications — Applications that are described herein for any of these products are for illustrative purposes only. WeEn Semiconductors makes no representation or warranty that such applications will be suitable for the specified use without further testing or modification.

Customers are responsible for the design and operation of their applications and products using WeEn Semiconductors products, and WeEn Semiconductors accepts no liability for any assistance with applications or customer product design. It is customer's sole responsibility to determine whether the WeEn Semiconductors product is suitable and fit for the customer's applications and products planned, as well as for the planned application and use of customer's third-party customer(s). Customers should provide appropriate design and operating safeguards to minimize the risks associated with their applications and products.

WeEn Semiconductors does not accept any liability related to any default, damage, costs or problem which is based on any weakness or default in the customer's applications or products, or the application or use by customer's third-party customer(s). Customer is responsible for doing all necessary testing for the customer's applications and products using WeEn

Semiconductors products in order to avoid a default of the applications and the products or of the application or use by customer's third-party customer(s). WeEn does not accept any liability in this respect.

Export control — This document as well as the item(s) described herein may be subject to export control regulations. Export might require a prior authorization from competent authorities.

Evaluation products — This product is provided on an "as is" and "with all faults" basis for evaluation purposes only. WeEn Semiconductors, its affiliates and their suppliers expressly disclaim all warranties, whether express, implied or statutory, including but not limited to the implied warranties of non-infringement, merchantability and fitness for a particular purpose. The entire risk as to the quality, or arising out of the use or performance, of this product remains with customer.

In no event shall WeEn Semiconductors, its affiliates or their suppliers be liable to customer for any special, indirect, consequential, punitive or incidental damages (including without limitation damages for loss of business, business interruption, loss of use, loss of data or information, and the like) arising out the use of or inability to use the product, whether or not based on tort (including negligence), strict liability, breach of contract, breach of warranty or any other theory, even if advised of the possibility of such damages.

Notwithstanding any damages that customer might incur for any reason whatsoever (including without limitation, all damages referenced above and all direct or general damages), the entire liability of WeEn Semiconductors, its affiliates and their suppliers and customer's exclusive remedy for all of the foregoing shall be limited to actual damages incurred by customer based on reasonable reliance up to the greater of the amount actually paid by customer for the product or five dollars (US\$5.00). The foregoing limitations, exclusions and disclaimers shall apply to the maximum extent permitted by applicable law, even if any remedy fails of its essential purpose.

Translations — A non-English (translated) version of a document is for reference only. The English version shall prevail in case of any discrepancy between the translated and English versions.

### Trademarks

Notice: All referenced brands, product names, service names and trademarks are the property of their respective owner

## Contents

<b>1.</b>	<b>Introduction</b>	<b>1</b>
<b>2.</b>	<b>Materials</b>	<b>1</b>
2.1	Printed-circuit boards and footprints	1
2.2	Semiconductor packages	5
2.3	Solder paste	9
<b>3.</b>	<b>Moisture sensitivity level and storage</b>	<b>9</b>
<b>4.</b>	<b>Surface mounting process</b>	<b>11</b>
4.1	Solder paste printing	11
4.2	Semiconductor package placement	14
4.3	Reflow soldering	16
4.4	Solder and terminal finish or solder ball compatibility	19
<b>5.</b>	<b>Inspection and repair</b>	<b>20</b>
5.1	Inspection	20
5.2	Repair	21
5.2.1	Device removal	22
5.2.2	Site preparation	22
5.2.3	Solder paste printing	23
5.2.4	Device placement	23
5.2.5	Soldering	23
<b>6.</b>	<b>Component handling</b>	<b>23</b>
6.1	Electrostatic charges	23
6.1.1	Workstations for handling ESD sensitive components	Error! Bookmark not defined.
6.1.2	Receipt and storage of components	24
6.1.3	PCB assembly	24
6.1.4	Ultra small leadless packages (such as SOD882, SOT883)	25
<b>7.</b>	<b>Abbreviations</b>	<b>27</b>
	<b>Revision History</b>	<b>31</b>
	<b>Contact Information</b>	<b>31</b>
	<b>Legal information</b>	<b>29</b>
	Definitions	29
	Disclaimers	29
	Trademarks	29
	<b>Contents</b>	<b>30</b>

Please be aware that important notices concerning this document and the product(s) described herein, have been included in section 'Legal information'.

© WeEn 2019.

All rights reserved

For more information, please visit: <http://www.ween-semi.com>

Date of release: 05 August 2019

Document identifier: WAN003